



**JEWISH**  
HOME AND  
CARE CENTER  
FOUNDATION

# ANNUAL REPORT

## 2016-17

### **Supporting Ovation Communities**

Ovation Jewish Home

Ovation Chai Point

Ovation Sarah Chudnow



## MISSION STATEMENT

The mission of the Jewish Home Foundation is to support the Jewish Home, Chai Point and Sarah Chudnow communities in providing those services that enable our seniors or infirm to be part of a quality Jewish environment with comfort, meaning, independence and dignity.

## To our friends and supporters,



Twenty-five years ago, the Helen Bader Center opened as an innovative and ground-breaking home that, through its architecture

and programming, recognized and addressed the unique social and physical needs of individuals with dementia, revolutionizing the approach to their care. This would not have happened without the compassion and extraordinary financial support of Helen Bader. Her vision created an environment that moved away from the institutional and towards an elevation of the soul. Our 2016-2017 Annual Report honors her living legacy and the ongoing outstanding support of Bader Philanthropies.

Over this quarter-century we have observed vast changes in health care and implemented innovative technologies and insightful research.

We are focused on lighting the path to advance exemplary care and a cure for people living with Alzheimer's and other dementia, here and all over the world. We do this on the shoulders of those who've come before us; at Ovation Communities we're celebrating and giving life to our benefactor's legacy each precious moment throughout our caring communities.

Take a few moments and read about Helen's incredible story and the lives she has impacted for generations. And please take note of the thousands of people we assist every year, because of your loving generosity, whether living independently or with assistance, needing rehabilitation and therapy, or seeking respite through our Adult Day Center programs. On behalf of our Boards of Directors, all Ovation employees, our volunteers and, humbly, our residents and their families, thank you for your continuing support of our communities.

Gratefully,

A handwritten signature in blue ink that reads "Michael I. Sattell". The signature is fluid and cursive.

Michael I. Sattell  
*President and Chief Executive Officer*

OVATION COMMUNITIES

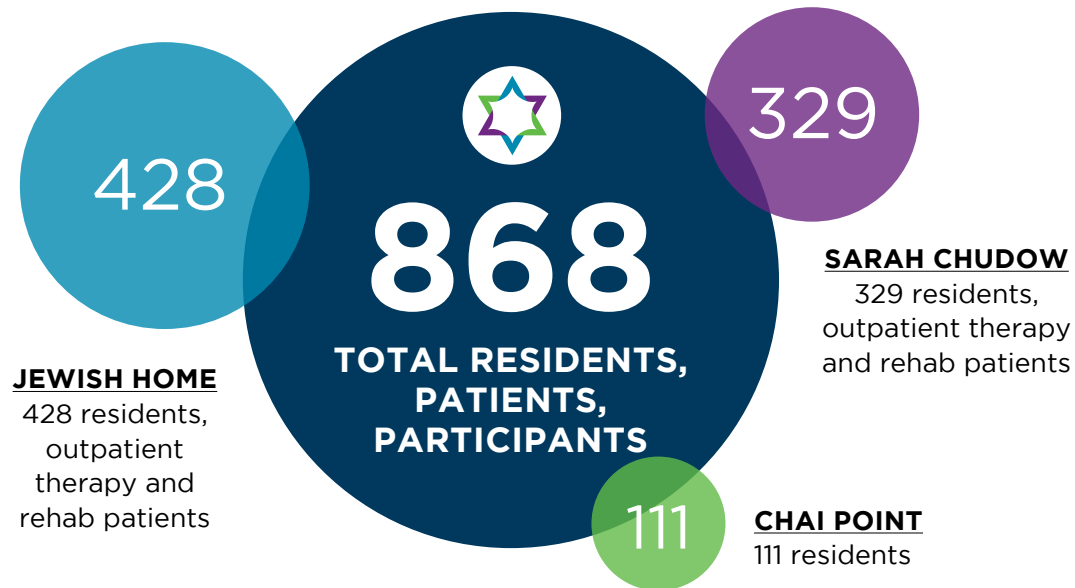
# By the Numbers

Fiscal Year 2017 (July 1, 2016 - June 30, 2017)

**\$841,018**  
TOTAL DONATED



**1,113** TOTAL GIFTS



**2,200** TOTAL KOSHER MOBILE MEALS

---

**28** Individuals at home

**1500** Total meals

---

**7** Hospitals served

**700** Total meals

Adult Day Services

**202** TOTAL INDIVIDUALS

**5,390** TOTAL DAYS OF SERVICE

**Adult Day Center**  
52 Individuals  
3,212 Days of service

**ReCharge!**  
81 Individuals  
1,697 Days of service

**Spark Program**  
23 Individuals  
132 Days of service

**Memory Cafe**  
32 Individuals  
144 Days of service

**R&R Club**  
14 Individuals  
205 Days of service

Intergenerational Programming

**2,551** TOTAL PARTICIPANTS

---

**109** Programs

**24** School and organization partnerships

**1,633** Resident participants

**918** Student participants

**414** TOTAL VOLUNTEERS



**16,818** TOTAL HOURS

Celebrating  
Helen Daniels Bader

25<sup>TH</sup>  
ANNIVERSARY

**The Helen Bader Center**

The new care model was

revolutionary,  
groundbreaking.

An innovative dementia care facility where people were treated like people and it felt like home. And it came thanks to passionate and powerful professionals, inspired by the vision of one extraordinary woman.

Helen Daniels Bader was a natural social worker, even before she received her formal degree. Through this new life endeavor and path of study, her close friend Nita Corré suggested she join the Jewish Home, where she eventually became Assistant Director of Social Services and Staff Education Coordinator. Her intense interest in helping those with Alzheimer's disease and dementia led her to partner with Dr. Uriel Cohen and Dr. Gerald Waisman of the University of Wisconsin-Milwaukee, authors of  *Holding on to Home: Designing Environments for People with Dementia*, and Dr. Christine Kovach, now Ovation's Research Professor in Aging.



This team worked tirelessly to bring Helen's dream of creating the "perfect" environment for people with dementia-related needs to life. They developed a state-of-the-art model focused on creating a familiar home-like atmosphere, rather than an institutional and clinical one. This innovative mindset was carried through every detail of the new center from architectural elements like space and lighting, to Helen's passion for personalized therapeutic activities like music and art. A real difference in care was evident. This was the residents' home, so there were no medical carts, staff wore non-clinical clothing, and residents were encouraged to use common areas created for socializing and connecting. Helen's sons, Daniel and David, supported the vision and the then Helen Bader Foundation funded the new project that broke ground in 1992 and opened the following year as the Helen Bader Center.

“Helen Daniels Bader was a truly remarkable woman. Her vision, commitment and hard work continue to make the Helen Bader Center the amazing home it is today,” said Michael Sattell, Ovation Communities President and CEO. “Family is central to our mission, and Helen’s sons along with the Helen Bader Foundation and now Bader Philanthropies, Inc. have been by our side every step of the way. We are profoundly grateful for their unwavering support.”

Today, the Helen Bader Center is not only a residential facility, but a place for research and education. It continues to be recognized nationally and internationally as an innovative and respected leader, thanks to Bader Philanthropies who has committed millions of dollars in improvements, physical enhancements, and program and research funding support over the last 25 years.

---

*“Helen was a dear friend and a remarkable woman who believed in giving back to her community through lifting others,” said Nita Corré, Foundation President Emeritus. “She led by example and with exquisite human qualities.”*

---


### **What’s on the horizon for the Helen Bader Center?**

Ovation Communities plans to continue the important research we have been doing, led by Dr. Kovach, and made possible by the residents who participate, and the generous funding by Bader Philanthropies and others. This helps us make lives better and longer, and prompts the best possible care for our residents.

We continue to look at and develop non-pharmacological treatments that enable well being, and new treatments for early and mid-stage Alzheimer’s and dementia. In addition, it is critical we train and support our staff. Ovation partners with the Alzheimer’s Association, and the Helen Bader Center team is trained as dedicated dementia specialists.

“What started as our guiding principles — to be about the business of living, to meet people where they are, and to enable life and well being in a truly supportive community environment where people feel comfortable — those are the threads that have persisted and will continue to persist,” said Dr. Kovach.

From strong roots planted by Helen Daniels Bader a quarter century ago, we are humbled and grateful to carry on this important living legacy.



***“As Bader Philanthropies and our community continues to evolve, we are humbled to have been on the ground floor of supporting compassionate care for individuals living with Alzheimer’s and dementia and supporting the work of the Helen Bader Center.”***

— Daniel J. Bader, Bader Philanthropies’ President/CEO

## Boards of Directors

### Jewish Home and Care Center Foundation

Joshua Gimbel,  
*Board Chair*  
Michael Altman  
Eugene Bass  
Lynne Bomzer  
Roberta Caraway  
Nita Corré  
Leonard Goldstein  
Donald Grande  
Shelly Hart  
Phil Himmelfarb  
Bill Komisar  
John Mellinger  
Robert Michels  
Arleen Peltz  
Jaclyn Small  
Richard Strait  
David Weber

### Ovation Chai Point

Howard Loeb,  
*Board Chair*  
Alan Borsuk  
Daniel Chudnow  
Marlene Deutsch  
Suzy Ettinger  
Jay Frank  
Rachel Gimbel  
Beverly Gruber  
Becky Michels  
Jeanette Peckerman  
Betsy Reilly  
Gary Sobel  
Stan Wynn

### Ovation Sarah Chudnow

Lynne Bomzer,  
*Board Chair*  
Steven Baruch  
Todd Brachman  
Daniel Chudnow  
Dr. David Coran  
James Deshur  
Suzy Ettinger  
Dina Irwin  
Robin Irwin  
Mike Joseph  
Werner Rickheimer  
Mary Anne Selby  
Fred Wein

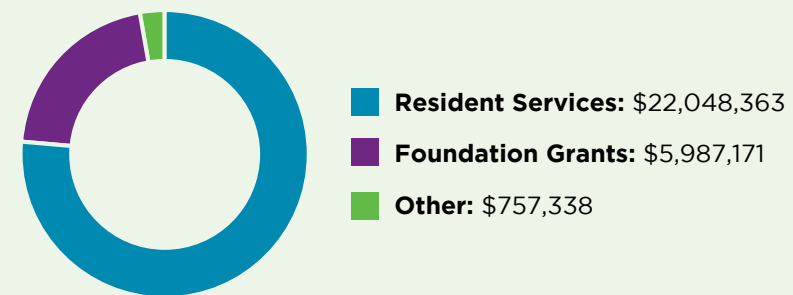
### Ovation Jewish Home

Robin Irwin,  
*Board Chair*  
Nathan Bernstein  
Dr. Judy Coran  
Josh Gimbel  
Rachelle Hart  
Sara Hoffman  
Karen Peck-Katz  
Bill Komisar  
Daniel Lee  
Dennis Maiman  
Judy Margolis  
William Mayer  
Arleen Peltz  
Beth Peterman  
Steve Richman  
Mary Anne Selby  
Ken Stein  
David Tepper  
Glenn Yamahiro  
Yoni Zvi

## Foundation 2016-2017 Support of Ovation Communities

*Ovation Communities Combined Operations  
July 1, 2016 through June 30, 2017*

### Revenue and Support - \$28,792,872

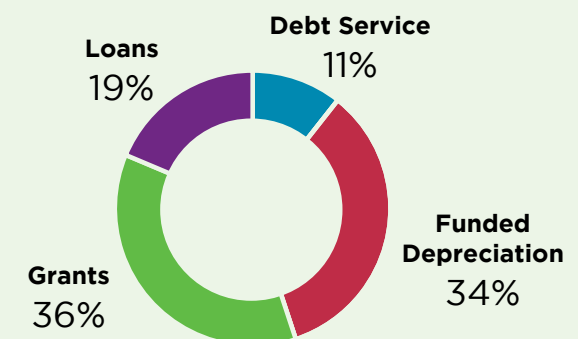


### Operating Expenses - \$28,828,403



### Foundation Support and Net Assets

*Foundation Net Assets  
June 30, 2017  
\$156,644,023*





Our residents enjoying a free community concert with the Milwaukee Symphony Orchestra.

## Donor Designated Funds

### Greatest Needs Funds

Specifically fund projects the administration believes are of the greatest urgency.

- Golden Alliance
- Friends of the Jewish Home and Care Center
- Nita Corré Dor I'Dor Corridor Fund
- Chai Point Fund
- Sarah Chudnow Community Fund
- Jewish Home and Care Center Fund

### Resident Care

Funds geared toward the medical related quality of life for residents.

- Helen Bader Center Fund
- Hans Schapira Fund
- Kastrul Family Jewish Home and Care Center
- Medical Equipment Fund
- Lillian Garner Fund [ [Learn more on next page](#) ]
- Sarah Chudnow "Bikkur Cholim" Award Fund
- Minnie K. Friedman Rehabilitation Center Fund

### Resident Services

Day-to-day enhancements including personal care items residents may need including haircuts.

- Sanford J. Ettinger Chai Point Library Fund
- Minow Family Library Fund
- Beatrice Miller Beauty Shop Fund

### Spiritual Development

Funds for pastoral care, religious programming, and our Synagogues.

- Hyman Kastrul Synagogue Fund
- Sam and Dora Levinsky Shabbat Fund
- Burton Minow "Oneg Shabbat" Fund
- Avrum and Anita Chudnow Shabbat Fund
- Kahn Fund

### Music and Art

Provides cultural programming for residents.

- Yaker and Sarah Rakita Fund
- Harry and Celia Perlstein Afternoon of Music Fund
- Gilbert Meisel Music Fund
- Frisch Family Music Fund
- Dr. Myron and Phyllis Shuster Fund
- Irving and Clarissa Lore Fund
- RUACH Fund

### Resident Activities

Funds keep residents engaged in a variety of enriching activities.

- Frances and Ezra Berman Activity Fund
- Edith Jacobson Ice Cream Social Fund
- Ida Soref Ice Cream Social Fund
- Martin F. Stein Intergenerational Fund
- Posner Chair for Intergenerational Programming
- Adult Day Center Fund
- Herschel Gellerman Memorial Fund
- William L. Komisar Fund
- Peck Vehicle Fund

### Residential Facilities

Funds keep our campuses beautiful for residents and visitors to enjoy, and aids in preparing us for future needs in health care.

- Lee and Lilly Lerner Fund
- Monya's Garden Fund
- Esther and Lester Heiny Beautification Fund
- Celia and Jacob Schnell Fund

### Education

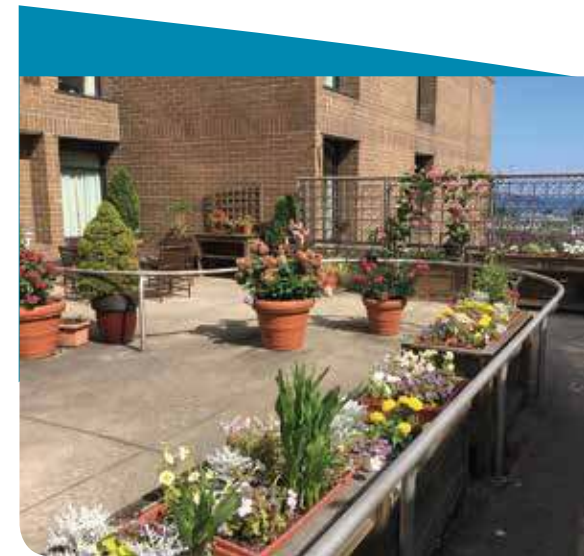
Supports classes and training to further education of our staff so residents always get the best of care with the most current methods.

- Ruth Coleman Educational Fund
- Elizabeth Laskin Educational Fund
- Nita Corré Educational Fund
- Nina Noemi and Sidney Zelik Widell Fund
- Education Fund

### Employee Appreciation

Provides residents, families, and staff an opportunity to thank employees for going above and beyond.

- Kruglak National Nursing Home Week Fund
- Lore and Martin Lewin Employee Excellence Award Fund
- Stella Plous Caring Award Fund
- Maurice Surlow Award Fund [ [Learn more on next page](#) ]



The beautiful Monya's Garden provides our residents with fresh air and sunshine.

# Meet the Funds

## 2016-2017 Highlighted Funds

To find out more about the described funds or other funds or to make a donation visit our website at [ovation.org](http://ovation.org) or contact Tanya Mazor-Posner, Vice President of Development at the Jewish Home and Care Center Foundation at 414-721-9260 or [tmazor-posner@ovation.org](mailto:tmazor-posner@ovation.org).

### Lillian Garner Fund

The daughter of Hungarian immigrants, Lillian (nee Weiss) Garner was born on February 2, 1912 in Wisconsin. Well educated with a terrific financial aptitude, she worked in her family's furniture manufacturing



*Lillian and Lawrence Garner*

business, the Northwestern-Weiss Woodwork Corporation. She married a prominent Milwaukee ophthalmologist, Dr. Lawrence Garner and after his retirement, the couple moved to La Jolla, California.

In 1997, Lillian called Nita Corré, at that time, President of the Jewish Home and Care Center; Lillian wanted to arrange a tour of our facility. A few weeks later, Lillian came, toured the facility and met with residents. A ten-year friendship evolved between Nita and Lillian. At the end of her life, Lillian told Nita, "you are the daughter, I never had." In 2007, Lillian Garner of blessed memory, bequeathed \$38 million to the Jewish Home and Care Center Foundation to ensure the high standard of care is given to all of our residents.



### Maurice Surlow Award Fund

Maurice Surlow was the second youngest of eight children born in Hungary on October 13, 1898. Maurice emigrated with his family to Milwaukee in the early part of the 20th century. He deeply cared about the needs of the Jewish people. Two of Maurice's sisters lived at the Jewish Home and during the course of their residency there, Maurice developed a passion for the work we do. At his passing in 1997, he left a major bequest to the Milwaukee Jewish community of which a portion has been directed by his adoring family towards supporting outstanding Ovation Communities employees.



*July 2017 award recipients.*

Established in 2000, the Maurice Surlow Award ceremony takes place three times a year recognizing staff members who provide superior quality of care to our residents and their families, customer service qualities Mr. Surlow believed in. Staff members who receive the award are nominated by their peers, residents and families and are honored at a celebration where they receive a monetary gift as well as a plaque commemorating their accomplishments.





**JEWISH**  
HOME AND  
CARE CENTER  
FOUNDATION

1414 North Prospect Avenue  
Milwaukee, WI 53202-3089

Non Profit Org  
US Postage  
PAID  
Milwaukee, WI  
Permit No. 3120



**Jewish Home**  
MILWAUKEE

**Chai Point**  
MILWAUKEE

**Sarah Chudnow**  
MEQUON

**ovation.org**



**CONNECT WITH US**

